



Bathing establishment Fact Sheet

Bathhouse name	Lido Verde
Address	Viale Bernardini 690
City	Lido di Camaiore (LU)
Contacts	+39 331 2758804
Website	www.bagnolidoverde.it

TESTED BY: [Handy Superabile - Social Promotion Association](#) in summer 2023

Please note The following information refers to the verification date shown at the bottom of each card. **The Association** is not responsible for any significant changes made by the property after the visit.

Summary

Bathing establishment Fact Sheet	1
Arrival at the facility	2
Private/public parking.....	2
Pathway from the parking lot to the main entrance	3
Reception.....	3
Bar/restaurant	4
Internal Pathways and common services.....	5
Internal Pathways	5
Toilet and shower accessible to guests with reduced mobility	6
Changing room	7
Beach.....	7
Children's play area	8
Swimming pool	9
Doctors' Offices/Healthcare Facilities	9

Project carried out with the contribution of the



Project promoted by



Regione Toscana

Arrival at the facility

Private/public parking

Presence of private parking	YES
Presence of parking space reserved for people with disabilities	NO
Type of parking surface	GRAVEL
Public parking nearby	YES
	



Project carried out with the contribution of the



Presidenza del
Consiglio dei Ministri
Ministro per la disabilità



Pathway from the parking lot to the main entrance

Pathway from the car park to the entrance	Flat
There are markers and tactile maps	NO
Usable door/entrance width	more than 90 cm
	

Reception

Umbrella booking system	<input type="checkbox"/> Via web <input checked="" type="checkbox"/> By phone <input checked="" type="checkbox"/> On-site
Presence of multilingual staff	YES
Presence of plant plan with key to services available	NO
Presence of visuo-tactile map	NO



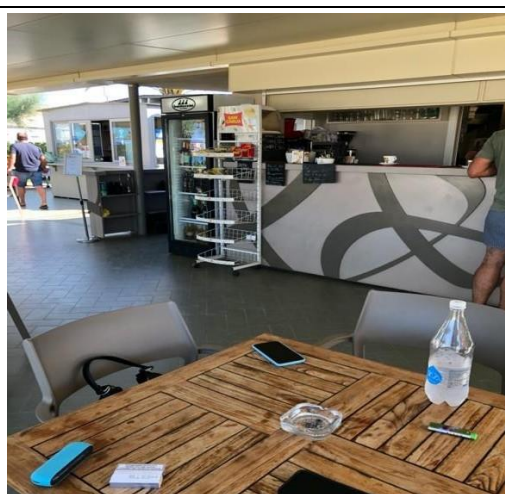


Bulletin board/information panels at an average height of 130 cm in a well-lit area and font size at least 14 dpi with a contrast ratio greater than 4.5:1	NO
The staff attended training courses on welcoming people with different disabilities	NO

Bar/restaurant

Type of venue	Bar/restaurant
Access to the premises	by ramp length 90 cm, width 60 cm, slope 4.6%
Usable door/entrance width	more than 90 cm
Bar counter	more than 100 cm
Types of tables	with central support
Space underneath the tables from the floor	more than 70 cm
Multilingual menu	YES
Menus with large print fonts	NO
Braille menu	NO
Table service for people with disabilities	YES
Availability of gluten-free food	<input checked="" type="checkbox"/> bread <input type="checkbox"/> pasta <input type="checkbox"/> biscuits <input checked="" type="checkbox"/> ice cream <input type="checkbox"/> Pre-packaged foods



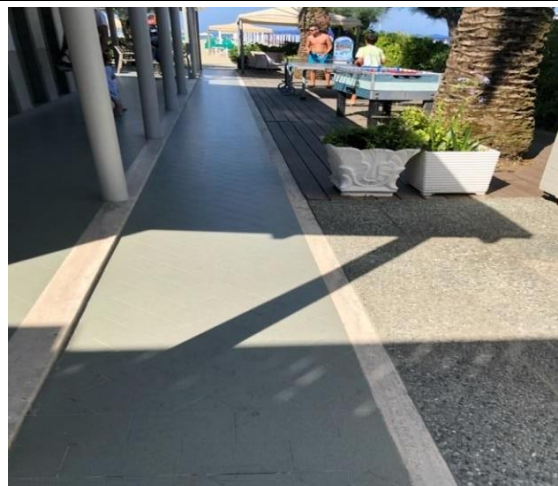


Internal Pathways and common services

Internal Pathways



Indicate whether the pathways connecting the entrance to the beach are flat or with ramps in addition to those already described

Flat paths





Toilet and shower accessible to guests with reduced mobility

Number of toilets accessible/usable by guests with reduced mobility	1
Access to the premises	Flat
Usable width of the entrance door	Cm 80
Toilet height	cm 48
Open front toilet seat	NO
Flexible hand shower at the side of the toilet	NO
Free space on the sides of the toilet	left more than 90 cm right cm 24 frontal more than 90 cm
Electric doorbell/phone	YES
Washbasin with space underneath for wheelchair	cm 76
Height from the ground on the bottom edge of the mirror	cm 120
Baby changing table	YES
	





Accessible shower available for guests with reduced mobility	NO
---	----

Changing room

Accessible changing room available for guests with reduced mobility	YES
Access to the premises	Flat
Usable door/entrance width	cm 90
Size of the dressing room	width 200 cm and depth 200 cm
Presence of a cot	NO
Coat rack height from the ground	over 140 cm

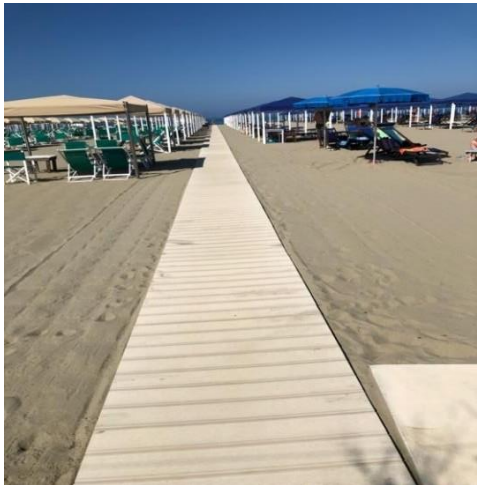



Beach

Type of beach	sand
Access to the beach	by ramp length 50 cm, width 86 cm, slope 8.6%





Walkway to reach the umbrellas	YES
Type of walkway	PVC
Walkway width	100 cm
	
Removable Platform between the walkway and the umbrella station to facilitate the passage and parking wheelchair	NO
Amphibious beach chair available for helping people with reduced mobility to enjoy swimming (owned by the establishment or by association)	YES

Children's play area

Children's play area	Accessible to children with reduced mobility
There are games for children with reduced mobility	YES





Swimming pool

The property has a swimming pool	NO
----------------------------------	----

Doctors' Offices/Healthcare Facilities

Hospitals near the facility	Ospedale Versilia SS!, 335 Camaiore tel. 0584/6051
Other Healthcare Facilities	<p>Emergency medical service Camaiore tel. 0584/616775 Distretto Sanitario ASL N. 12 Viareggio Via Sant'Elme, 30 Tel. 058483873</p> <p>Croce Verde Viale Italice, angolo via Risorgimento Tel. 058484013 Free First Aid for white codes Night medical guard Tel. 0584 83896 (h. 20-8)</p> <p>Misericordia Via P. I. da Carrara, 32 Tel. 0584752133/0584 752149</p>



Project promoted by



Regione Toscana

	<p>Medical service "San Camillo" Nursing Home Via P.I. da Carrara, 37 Tel. 0584 7391</p> <p>Dialysis service c/o Croce Verde Viale Italiceo, corner of Via Risorgimento Tel.058484013 affiliated with AUSL</p>
--	--

TESTED BY: Handy Superabile Social Promotion Association in summer 2023

Project carried out with the contribution of the



**Presidenza del
Consiglio dei Ministri**
Ministro per la disabilità